



ANTONINI  
NAVI



OFFSHORE PATROL VESSEL

OPV - 56

OPV-56

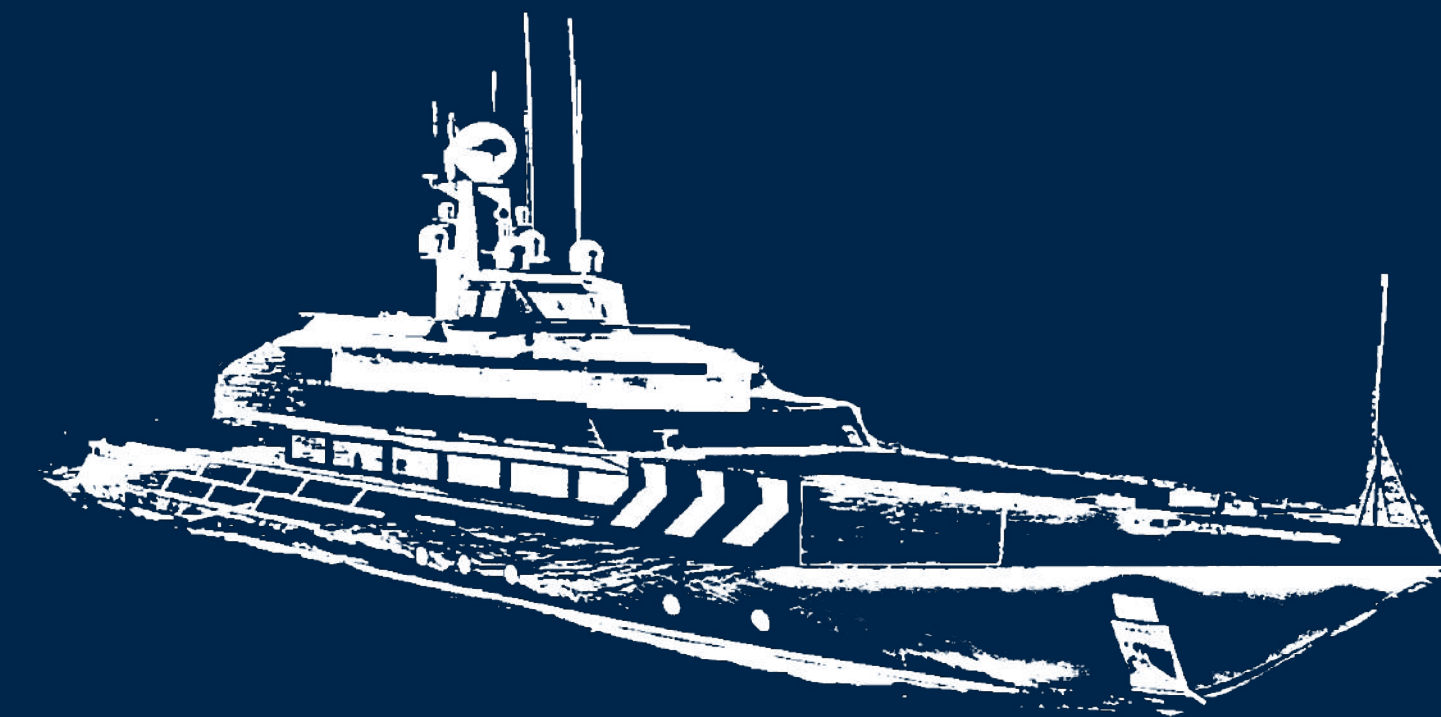
# CONCEPT

---



The O.P.V. 56 is a 56-meter “full-aluminum” yacht with a rugged shape that recalls the military character of her name, “Offshore Patrol Vessel”. Conceived according to a “functionalist approach” with each portion of the project reflecting its particular purpose, the big picture is remarkably simple.

This simplicity lends itself to seaworthiness, easy usability and streamlined services on board, in addition to the advantages in build: qualities that those with experience at sea appreciate.



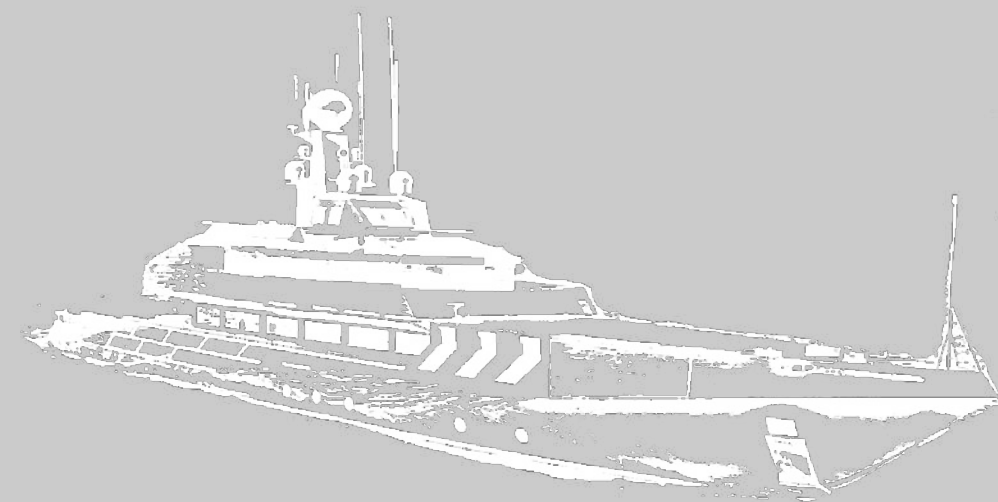
OPV-56

# CONCEPT

---



The design features a tall and impressive bow that faces the sea with confidence. Clean and essential, the lines imbue the ship with a unique personality. At the bow, the continuous deck accommodates a Helipad, while the upper deck is entirely dedicated to the owner. The aft deck exceeds 150 square meters to fulfill its multifunctional purpose; it is adaptable to any solution and may be customized extensively.



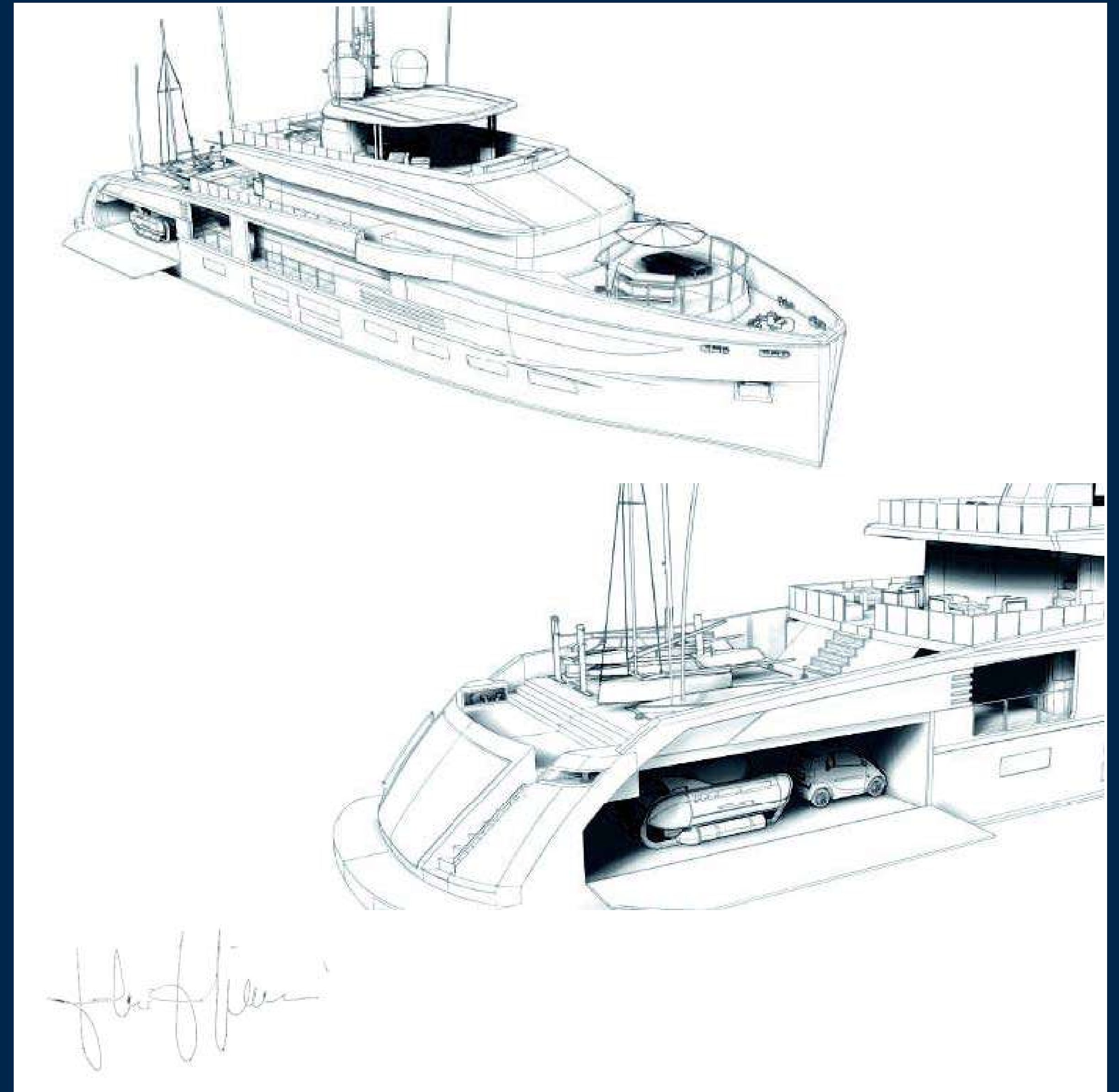


YACHT DESIGNER  
**FULVIO DE SIMONI**

Fulvio de Simoni initiated his career in the 1970s. Known for his multifaceted, innovative, and non-conformist design approach, he collaborated with shipyards globally and contributed to the construction of over three thousand boats, earning numerous awards.



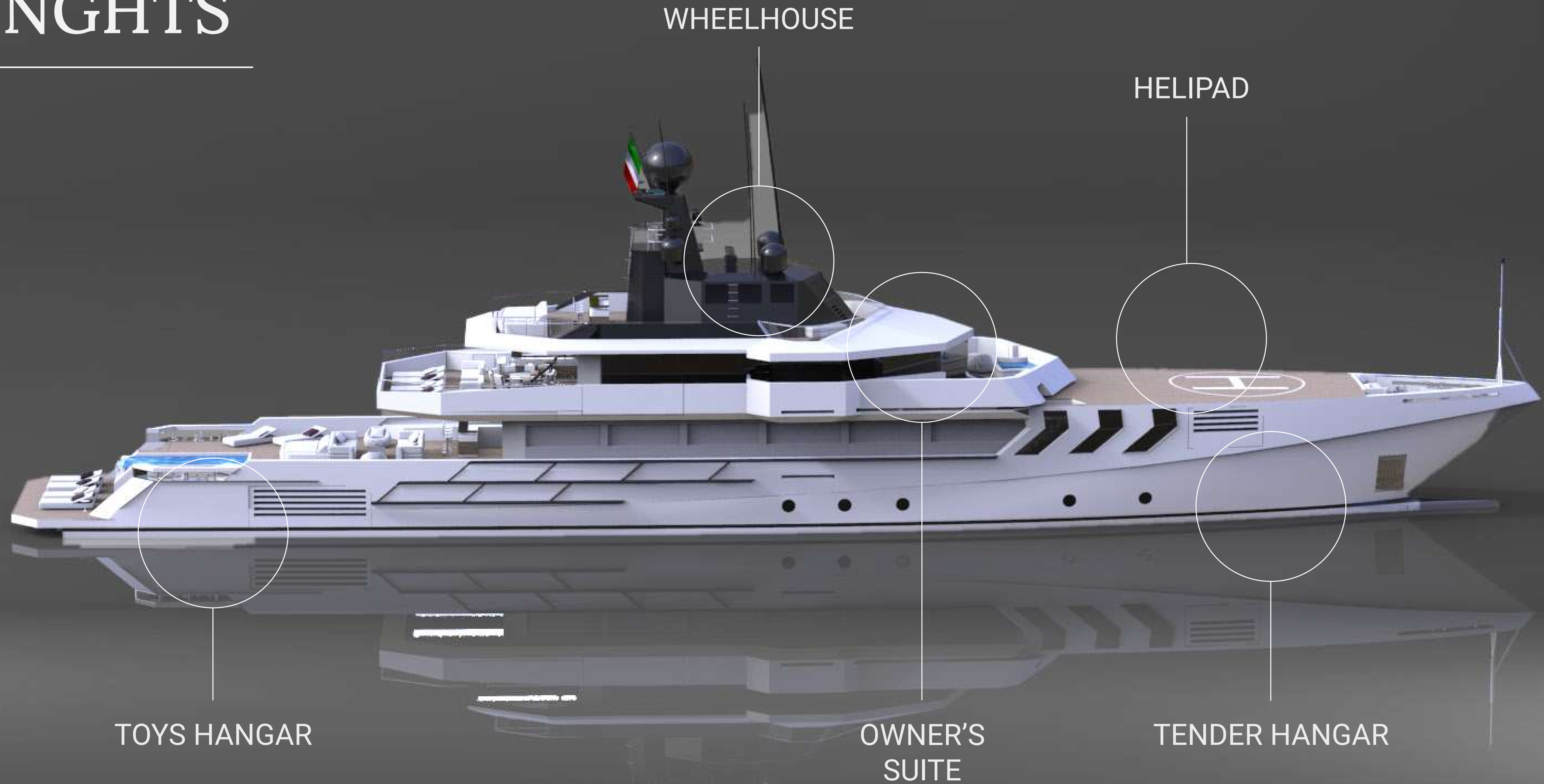
*Aldo Manna, Fulvio De Simoni, Simone Antonini*



OPV-56

# STRENGTHS

---



WHEELHOUSE

HELIPAD

TOYS HANGAR

OWNER'S  
SUITE

TENDER HANGAR

# OWNER'S CABIN

the Owner's suite can have a surface area of over 90 square meters and private terrace





OWNER'S CABIN



OPV-56

# TECHNICAL SPECIFICATION

---

## MATERIALS

Hull: ..... Aluminium

Superstructure: ..... Aluminium

## DIMENSIONS

Length over all (LOA): ..... 56.0 m

Maximum beam: ..... 9.0 m

Depth, amidship:..... 4.1 m

Draught, full load under the keel: ..... 2.2 m

GROSS TONNAGE: ..... <500 GT

## CAPACITIES

Fuel: ..... 60.000 Its

Fresh Water: ..... 10.000 Its

Black Water: ..... 4.000 Its

Bilge: ..... 1.000 Its

## PERFORMANCE

Max Speed: ..... 16.0 kts

Range @10 kts:..... 3.500 nm

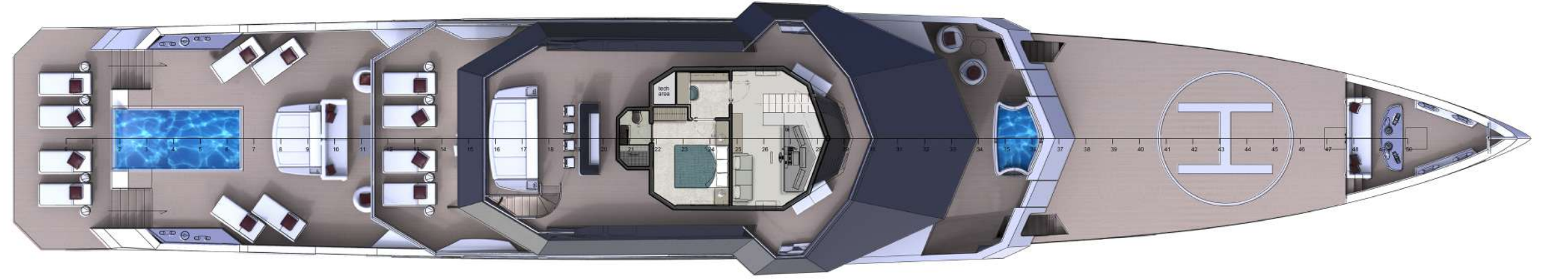
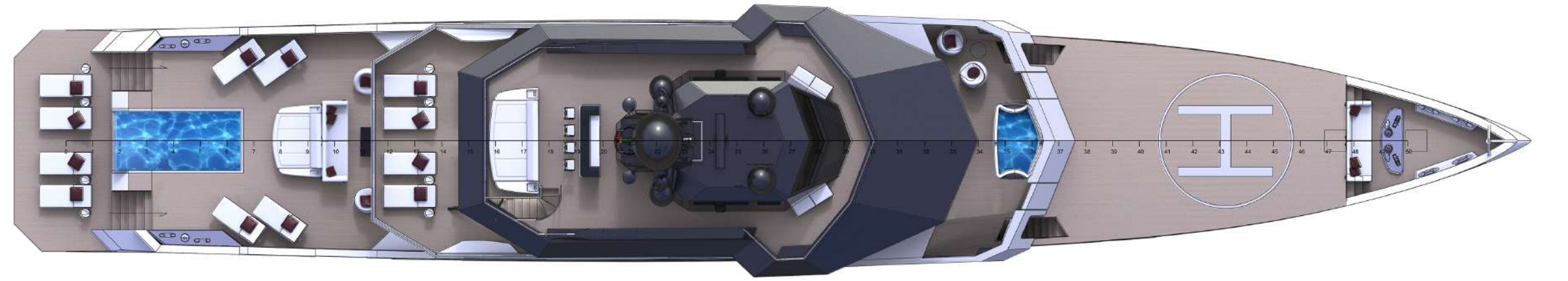
ENGINES std PROPULSION:.....2xCat C32 1418 KW

## ACCOMMODATION

Passengers: ..... 12p - 6 Cabins

Crew: ..... 10+1p - 6 Cabins

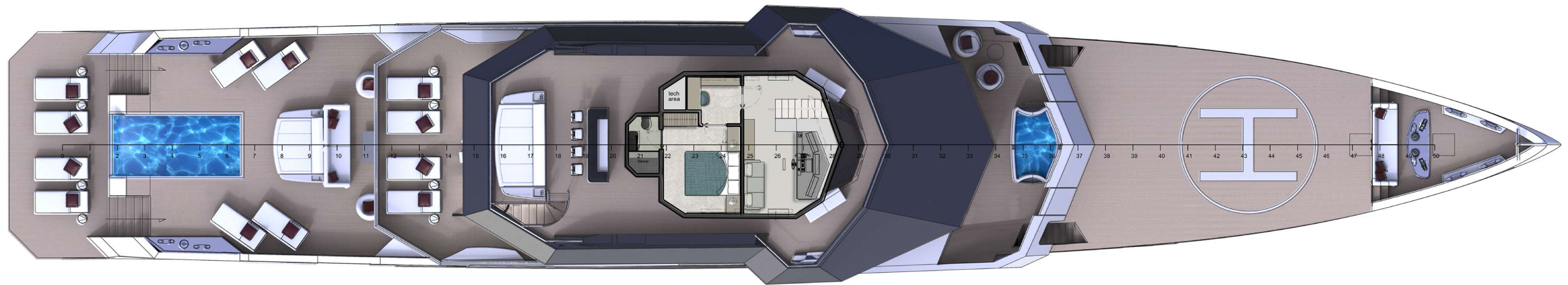
OPV-56  
**GENERAL  
ARRANGEMENT**



OPV-56

# SUN DECK

---



OPV-56

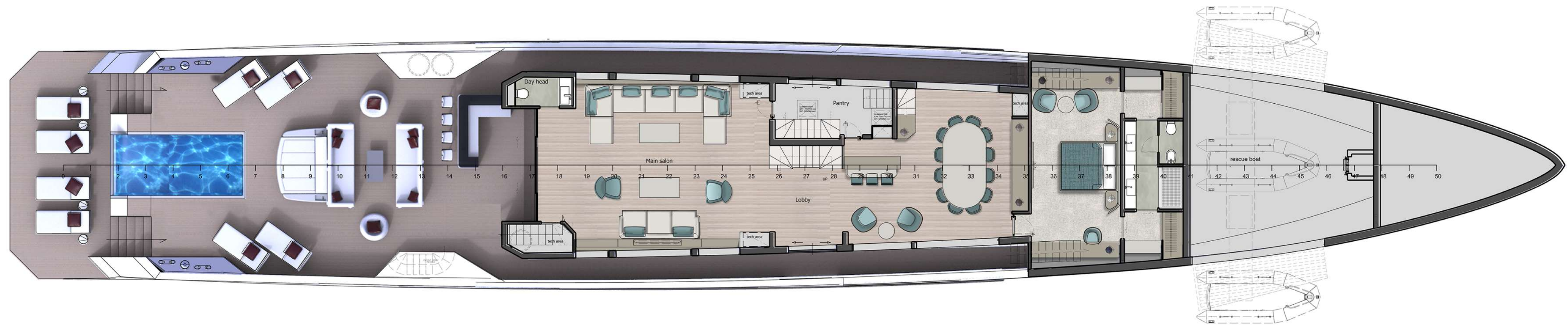
# UPPER DECK

---



OPV-56

# MAIN DECK



OPV-56

# LOWER DECK





OFFSHORE PATROL VESSEL

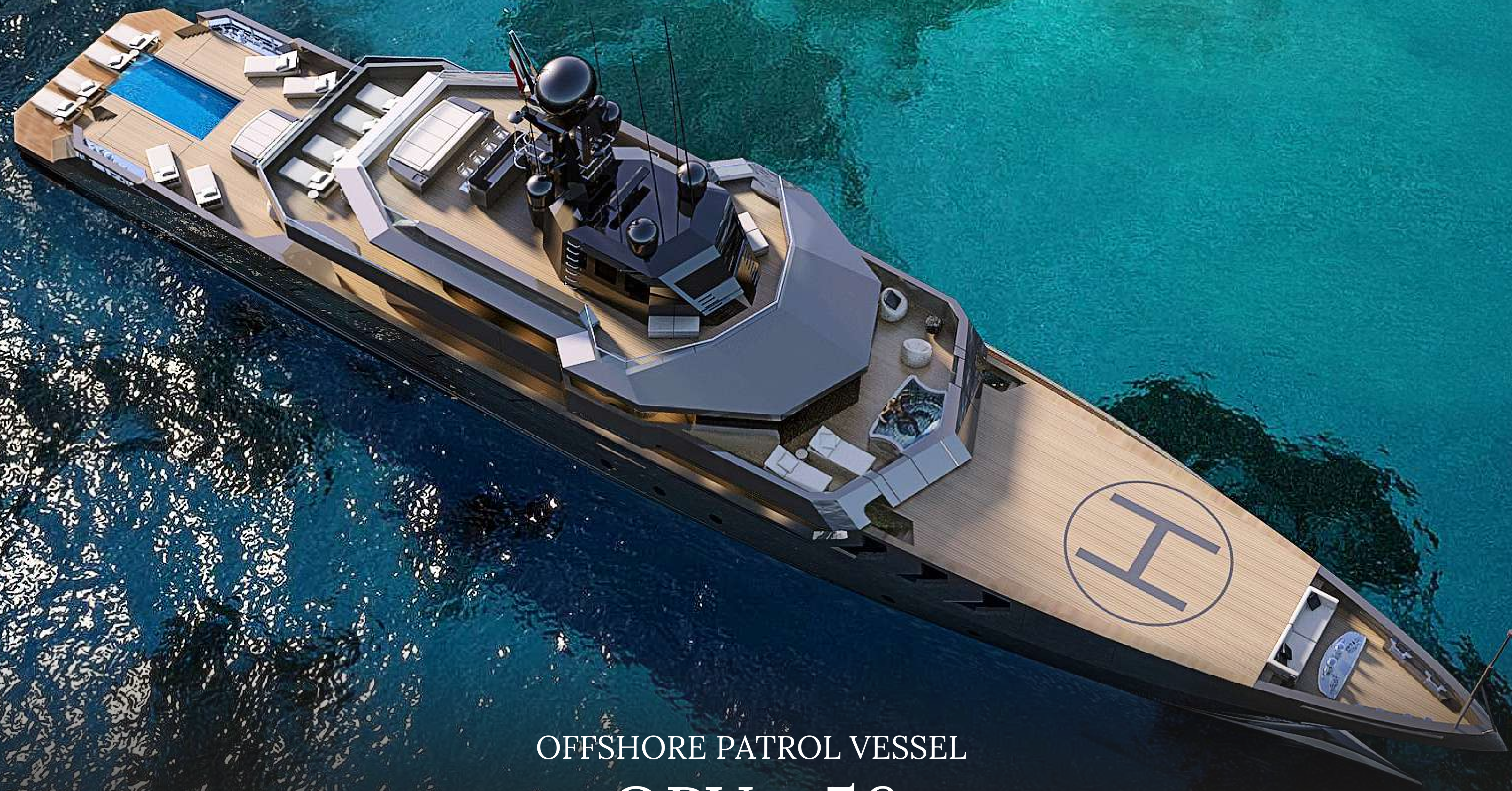
OPV - 56



OFFSHORE PATROL VESSEL

OPV - 56





OFFSHORE PATROL VESSEL

OPV - 56



ANTONINI  
N A V I

ANTONINI NAVI S.R.L.

Sede legale e stabilimento:

Località Pertusola - Frazione Muggiano - 19032 Lerici (LA SPEZIA) - ITALY

Ph +39 0187 1771300

[info@antonininavi.com](mailto:info@antonininavi.com)

[www.antonininavi.com](http://www.antonininavi.com) - [www.gruppoantonini.it](http://www.gruppoantonini.it)